

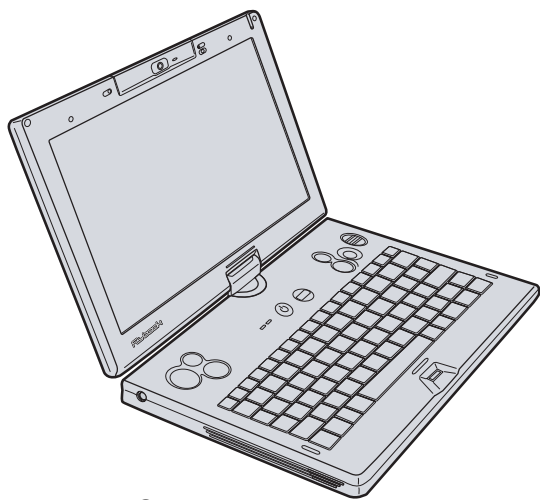
Flybook V5 Quick Start Guide

V5 Series

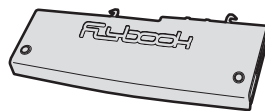
DIALOGUE

Unpacking Your V5

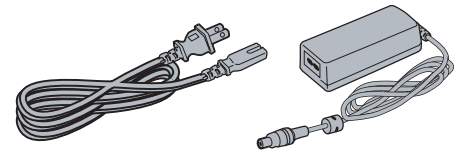
Unpack the V5 and check for the following items:



V5 Computer



Standard battery



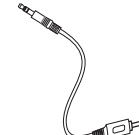
AC adapter and power cord



Recovery DVDs and Driver CD



Safety strap



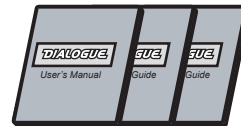
TV cable adapter



Stylus



Windows® Start Here



User's Manual and bundled booklets



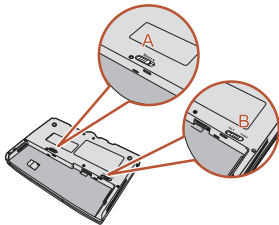
Warranty card

If any item is missing or damaged, repack the V5 and return it to your reseller.

Installing the Battery and Connecting the AC Adapter

Using the Battery Lock


There are two latches for securing the battery in place: the battery lock (B) and the battery release (A).

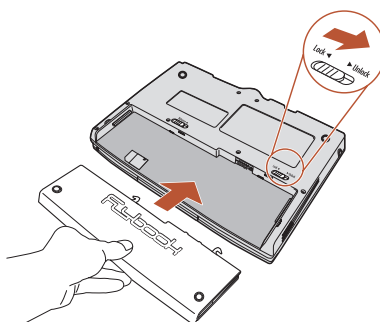



CAUTION: Always close the battery lock after inserting the battery. If the battery lock is not closed, the battery could fall out when carrying the computer and cause injury or damage the battery.

The battery lock must be manually closed. The battery release is spring loaded and closes automatically when you insert the battery.

Installing the Battery

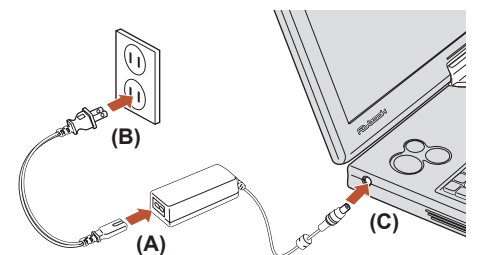
1. Slide the battery lock to the unlocked position .
2. Align the guides on the sides of the battery with the guides in the bay and then install the battery.



3. Slide the battery lock to the locked position .

Connecting the AC Adapter

1. Connect the AC cable (A) to the AC adapter.



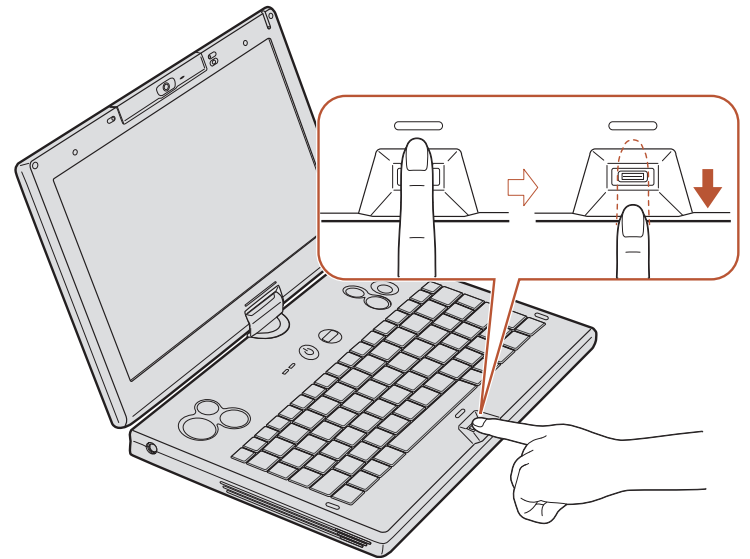
2. Connect the other end of the AC cable (B) to an electrical outlet.
3. Connect the AC adapter (C) to the AC jack on the computer. The battery LED lights.

Enrolling Your Finger

The fingerprint reader allows you to control access to your computer system and applications.

To enroll your finger:

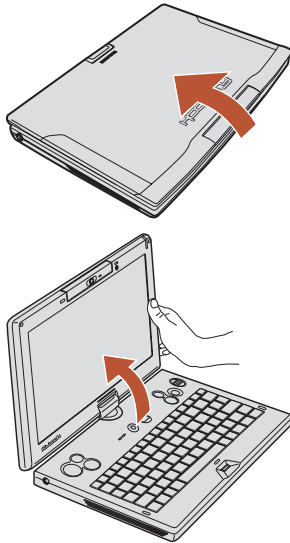
1. Click **Start | All Programs | VitaKey | MC3010 | System | System Setting**.
2. Follow the instructions in the Wizard.
3. When prompted, select the finger that you want to enroll.
4. Press your finger down evenly on the reader, then in one smooth action swipe your finger across the reader.
Repeat fingerprint enrollment as prompted in the Wizard.



Using the V5 in Clamshell Mode and Tablet Mode

Clamshell Mode

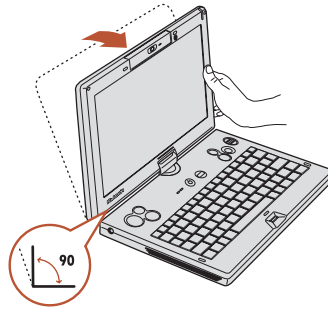
1. Open the display.
2. Adjust the display to a comfortable viewing angle.



Tablet Mode

CAUTION: Take care not to twist or force the display to an extreme angle when adjusting it.

1. Open the display.
2. Tilt the display forwards until it is vertical.

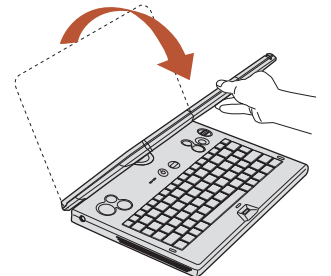


Do NOT twist the display counter-clockwise. You will damage the LCD display.

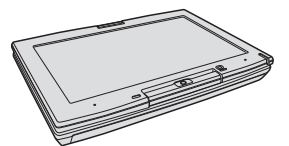
3. Twist the display clockwise 180 degrees.



4. Flip the screen down as shown.




The V5 can now be used as a tablet computer.



Turning on the V5 for the First Time

1. Press and hold the power button for two seconds to turn on the V5.
2. Refer to the Windows XP start here booklet to set up and activate your operating system.
3. The first time you use your computer, leave the AC adapter connected for eight hours to fully charge the battery. Thereafter, the standard charging time is about three hours.

More Information

For detailed information on using the V5, read the User manual. You can also access the User manual content directly from your computer. Just click the Flybook Control Center icon  in the System Tray and select **Help**. Your V5 online help opens.

For more information, please go to <http://www.dialogue.com.tw>.